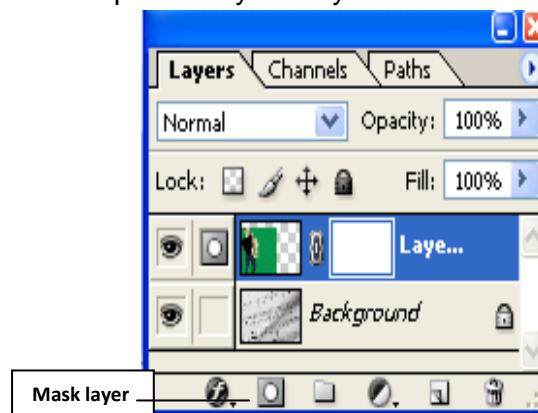


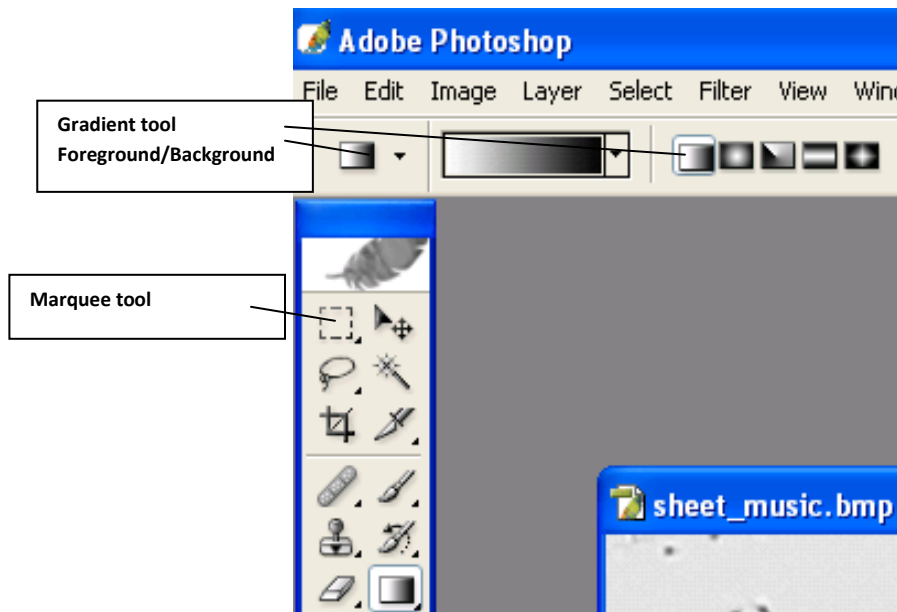
## Photoshop Fun #5



- (1) Open **sheet\_music.bmp**. Set the foreground color to white and the background color to black. Pressing the letter **X** will reverse the order.  
*Shortcut: double click anywhere inside Photoshop to open a file! (does not work on MAC)*
- (2) Save the image IC5\_first\_last.psd.
- (3) Open the second image, **man\_saxophone.jpg**. Drag this image layer on top of the background image in our first document. You can use the *Move* tool or copy and paste it. Make sure this dragged layer covers (or at least significantly overlaps) the background layer. Move this layer to the left or right edge of the image – your choice.  
*Shortcut: you can use File - Place...*
- (4) In the *Layers* palette and at the bottom of the palette, click on the *Layer Mask* icon. The image doesn't change, but if you look in the *Layers* palette, you'll see another thumbnail icon added to the right of your top layer's thumbnail icon. This represents your Layer Mask.



- (5) Click on the *Gradient* tool shared with the *Paint bucket* tool and in the *Options* bar, make sure the selected gradient is *Foreground to Background* (it is the top left icon) then take the *Gradient* tool and drag it through the image on the top layer, stopping before you reach the edge of that image. This will blend the images together.  
**Shortcut: press G**



- (6) You can continue to drag the *Gradient* tool over and over again, until the blend looks like you want. If you see the edge of your image, you have dragged too close to the edge or past it. Try re-dragging the *Gradient* tool, stopping about 1 inch before the edge of your image. (*gradient is perpendicular to the line you draw*)
- (7) To gain more control over your images, you can use the *Brush* tool with a soft-edged brush, and paint over the images. Black will paint the Background image in. White will paint the top image over the background.  
**Shortcut: press B**  
**[ ] Brush Size**  
**Shift + [ ] Feathering Amount**
- (8) Drag a third image layer, **violin.psd**, to the main document. Move this layer to the left or right edge of the image (opposite of saxophone player). Repeat steps #4-7.  
**Shortcut: you can use File - Place...**
- (9) To create a back screened effect, click on the *Menu* bar *Layer/New* and name it "rectangle". Create a rectangular marquee and fill it in with white. Add a drop shadow by clicking on the *Menu* bar/ *Layer/Layer Style/ Drop Shadow*, click *OK* and lower the *Opacity* of the shadow to about 55% (the opacity is located in the layers palette).
- (10) Use the *Text* tool and type in the white rectangular box that you created, "All That Jazz"<Enter> "6:00 p.m. February 14, 2009 at Newberry Hall". Make the second line of the text a smaller font size to keep it on one line. Make the text color black, centered in the white box and be creative.  
**Shortcut: press T**
- (11) Save your image as IC5\_First\_Last.psd.